

Figure 1 of the supplementary data. Time-to-event curves for the device-oriented composite endpoint (A), cardiac death (B), target vessel myocardial infarction (C), target lesion revascularization (D) and stent thrombosis (E) in patients stratified according to the culprit vessel. DOCE: device-oriented composite endpoint; TLR: target lesion revascularization; TVMI: target vessel myocardial infarction. (*Continues*)

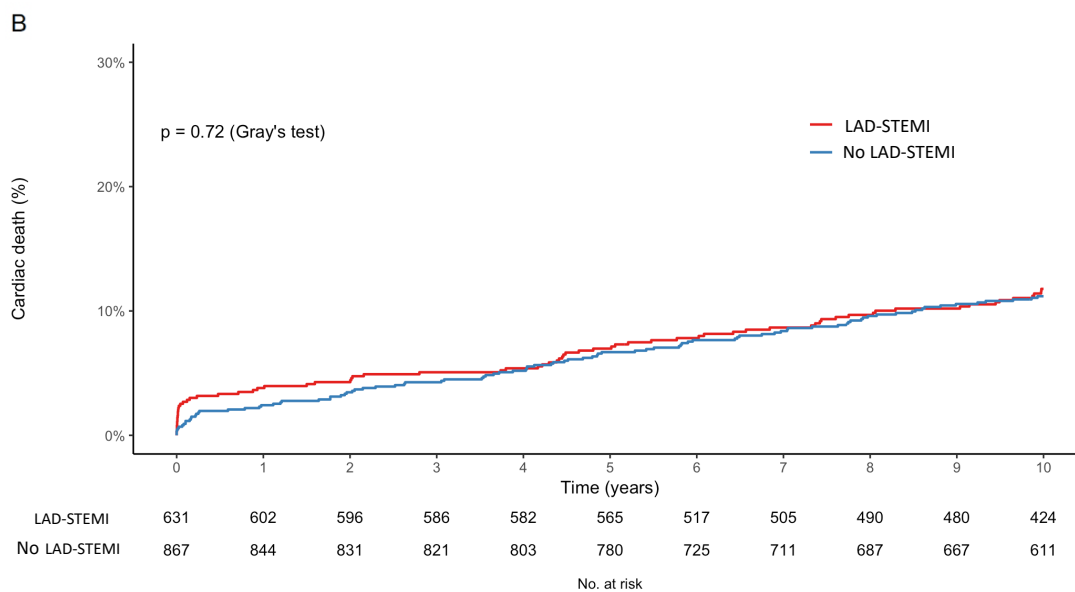
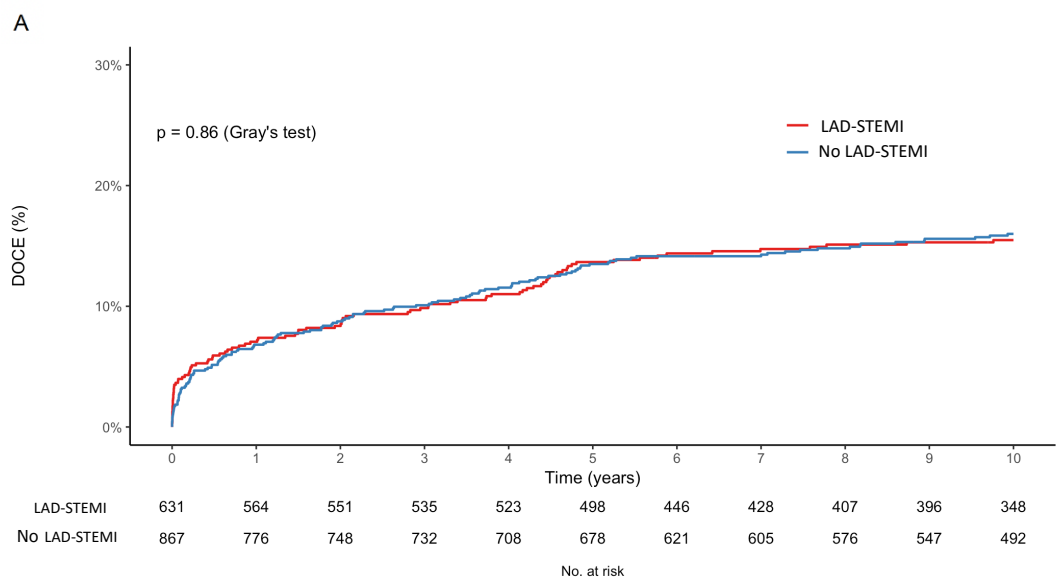


Figure 1 of the supplementary data. Time-to-event curves for the device-oriented composite endpoint (A), cardiac death (B), target vessel myocardial infarction (C), target lesion revascularization (D) and stent thrombosis (E) in patients stratified according to the culprit vessel. DOCE: device-oriented composite endpoint; TLR: target lesion revascularization; TVMI: target vessel myocardial infarction. (Continued)

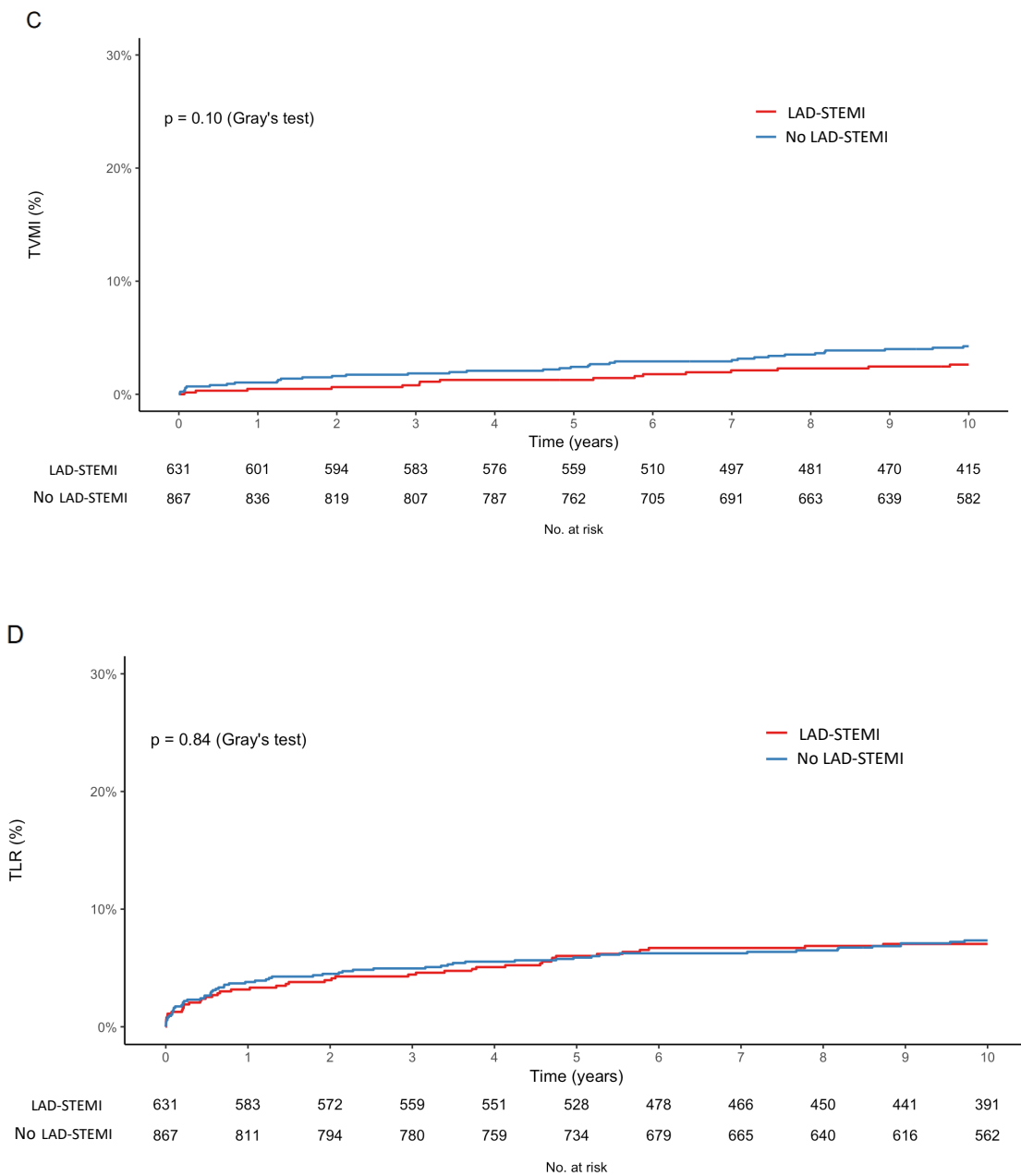


Figure 1 of the supplementary data. Time-to-event curves for the device-oriented composite endpoint (A), cardiac death (B), target vessel myocardial infarction (C), target lesion revascularization (D) and stent thrombosis (E) in patients stratified according to the culprit vessel. DOCE: device-oriented composite endpoint; TLR: target lesion revascularization; TVMI: target vessel myocardial infarction. (*Continued*)

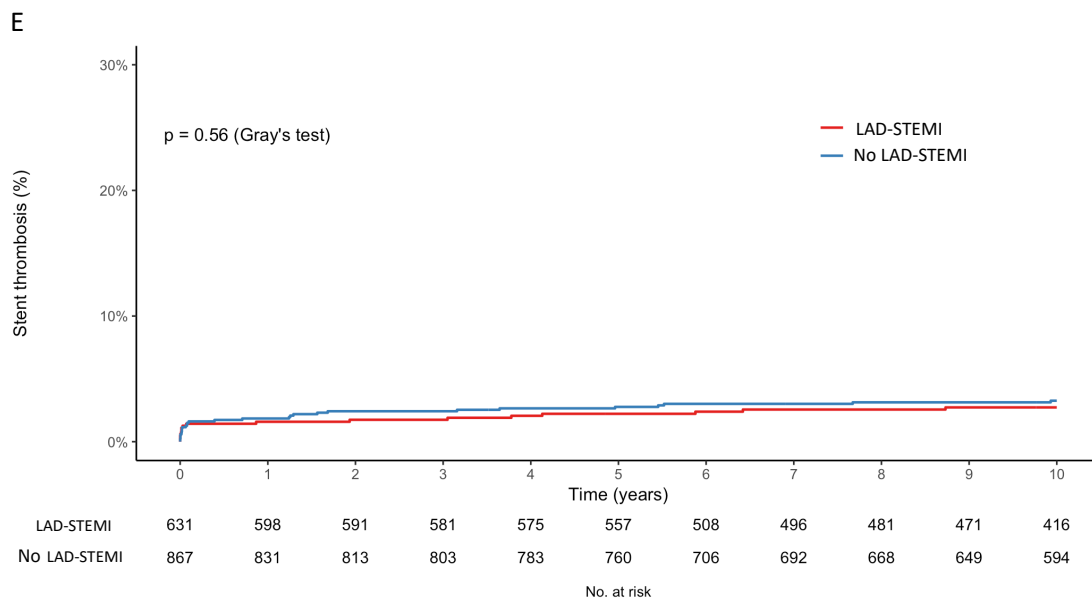


Figure 2 of the supplementary data. Landmark analysis for device-oriented composite endpoint (A), cardiac death (B), target vessel myocardial infarction (C), target lesion revascularization (D) and stent thrombosis (E) in patients stratified according to the culprit vessel. DOCE, device-oriented composite endpoint; TLR, target lesion revascularization, TVMI, target vessel myocardial infarction. (*Continues*)

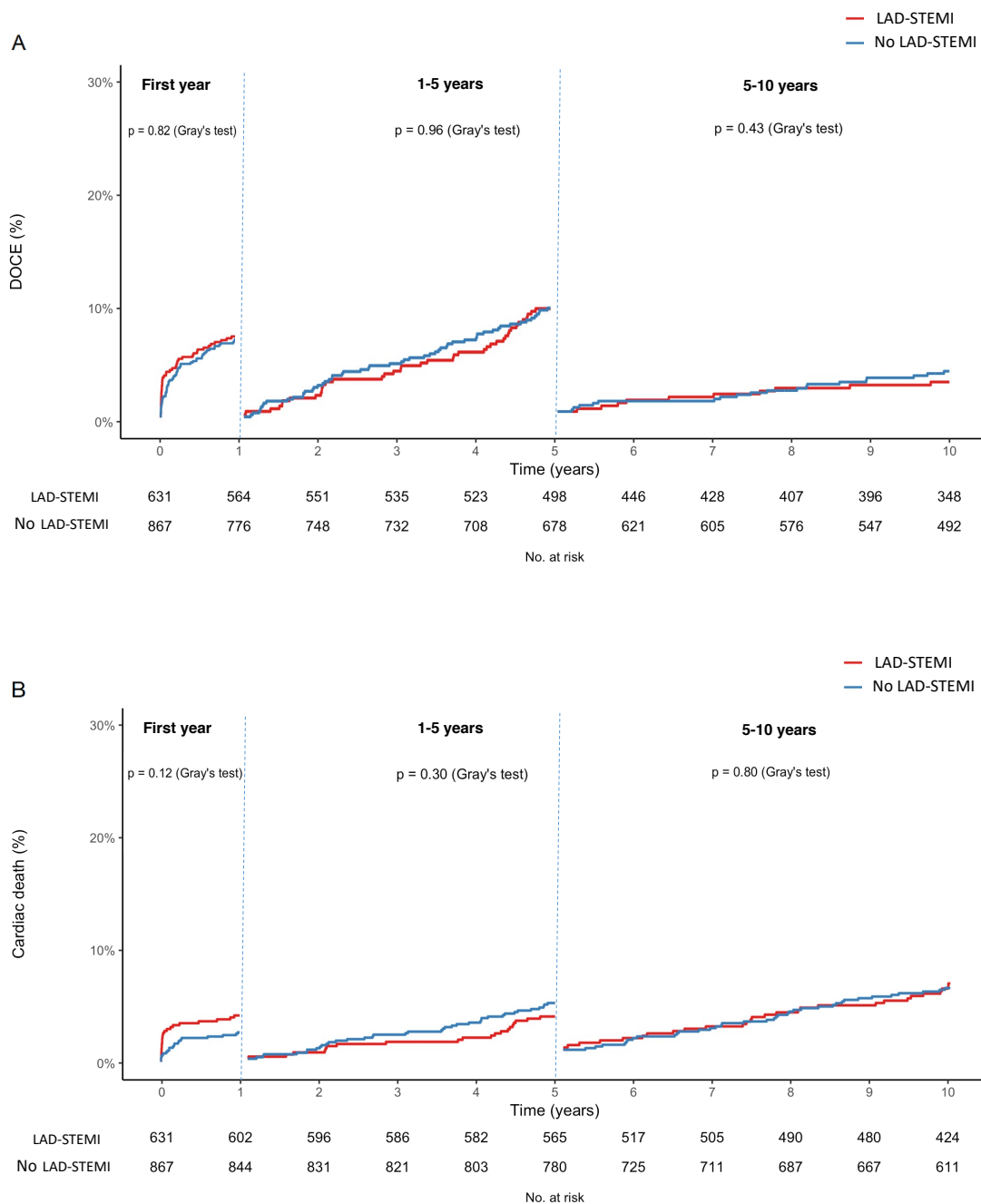


Figure 2 of the supplementary data. Landmark analysis for device-oriented composite endpoint (A), cardiac death (B), target vessel myocardial infarction (C), target lesion revascularization (D) and stent thrombosis (E) in patients stratified according to the culprit vessel. DOCE, device-oriented composite endpoint; TLR, target lesion revascularization, TVMI, target vessel myocardial infarction. (Continued)

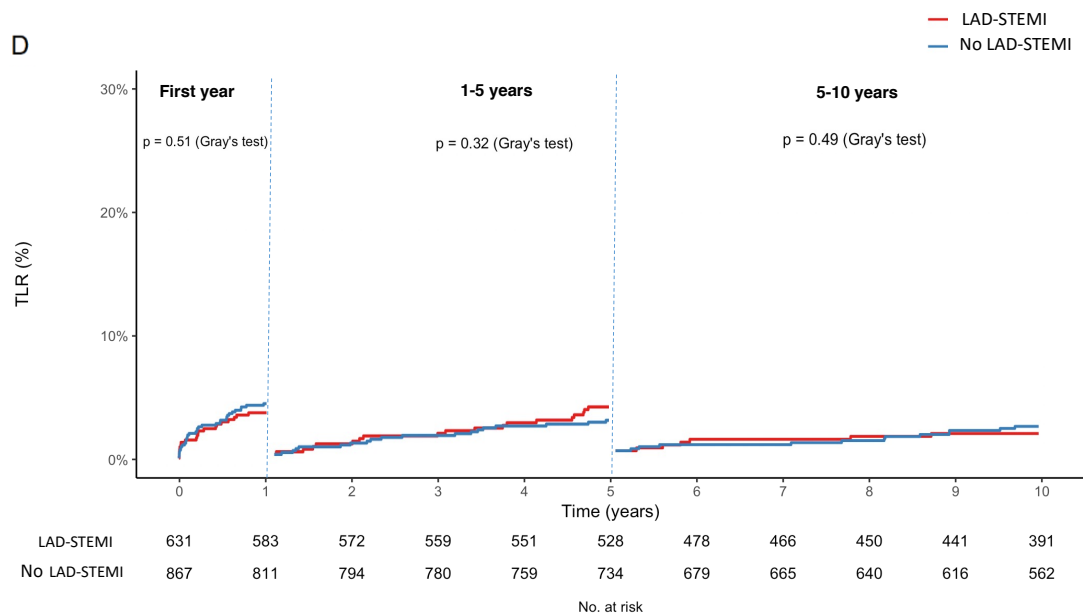
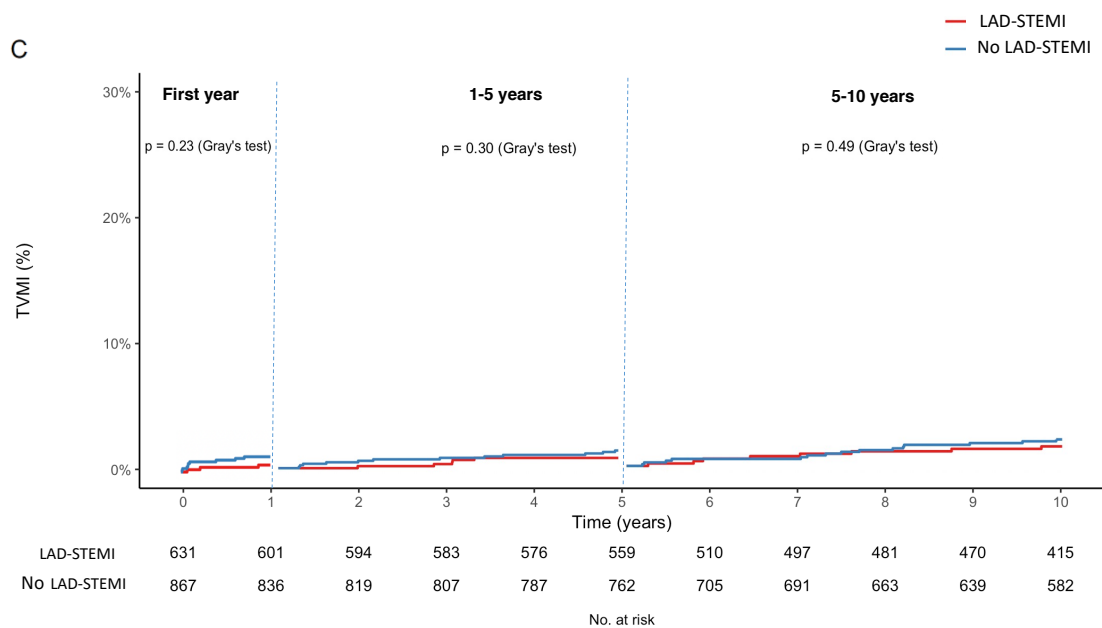


Figure 2 of the supplementary data. Landmark analysis for device-oriented composite endpoint (A), cardiac death (B), target vessel myocardial infarction (C), target lesion revascularization (D) and stent thrombosis (E) in patients stratified according to the culprit vessel. DOCE, device-oriented composite endpoint; TLR, target lesion revascularization, TVMI, target vessel myocardial infarction. (Continued)

